

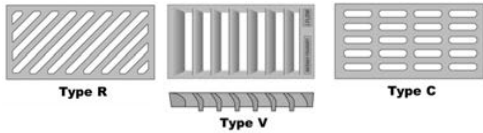
■ Note: When specifying/ordering grates, refer to "Choosing the Proper Inlet Grate" on pages 125-126.  
For a complete listing of FREE OPEN AREAS and WEIR PERIMETERS of all NEENAH grates, refer to pages 327-332.

## R-3295-2 Double Unit Frame, Grate, Curb Box

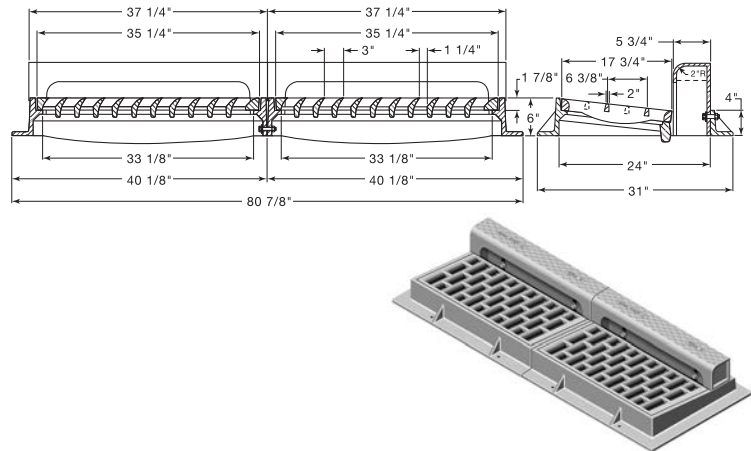
### Heavy Duty

Standard Grate (shown): Type L

Also available with grate Type R-diagonal, Type C or Type V.



CATALOG NUMBER	GRATE TYPE	SQ. FT. OPEN	WEIR PERIMETER LINEAL FEET
R-3295-2	L	4.2	8.8
R-3295-2	V	4.8	8.8
R-3295-2	C	4.2	8.8
R-3295-2	R	3.8	8.8

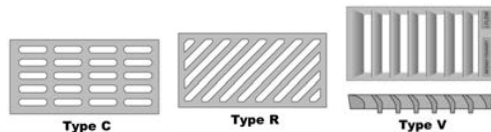


## R-3295-3 Triple Unit Frame, Grate, Curb Box

### Heavy Duty

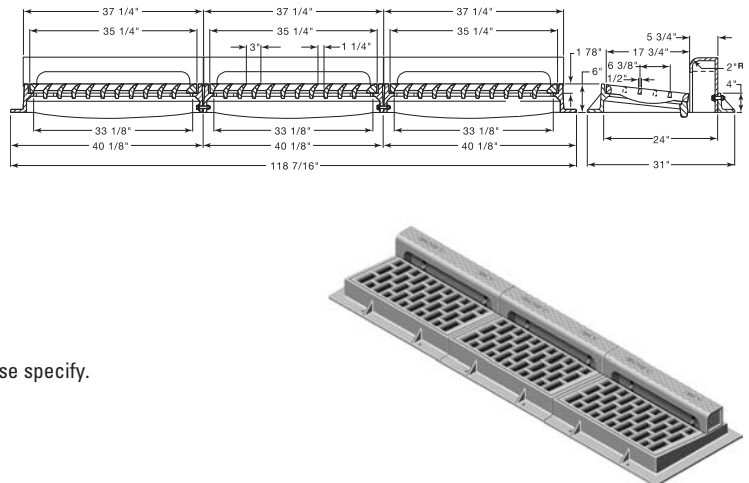
Standard Grate (shown): Type L

Also available with grate Type C, Type R-diagonal or Type V.



Additional center sections can be added for greater overall length – please specify.

CATALOG NUMBER	GRATE TYPE	SQ. FT. OPEN	WEIR PERIMETER LINEAL FEET
R-3295-3	L	6.3	11.8
R-3295-3	V	7.2	11.8
R-3295-3	C	6.3	11.8
R-3295-3	R	5.7	11.8



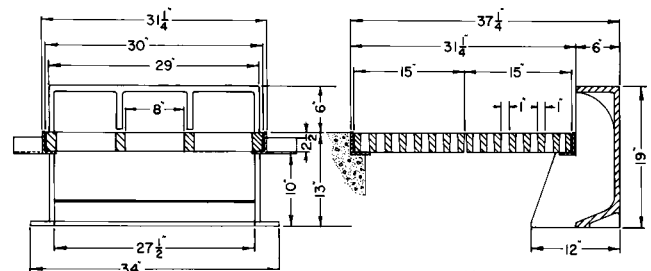
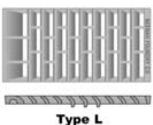
## R-3297-1 Combination Inlet Frame, Grate, Curb Box

### Heavy Duty

CATALOG NUMBER	GRATE TYPE	SQ. FT. OPEN	WEIR PERIMETER LINEAL FEET
R-3297-1	C	2.3	7.5
R-3297-1	L	2.4	7.5

Standard Grate (shown): Type C

Also available with grate Type L.



Fabricated steel frame, gray iron grates and curb box.

Supplied By:  
**TRENCHDRAIN  
SUPPLY**  
877-903-7246  
www.trenchdrainsupply.com